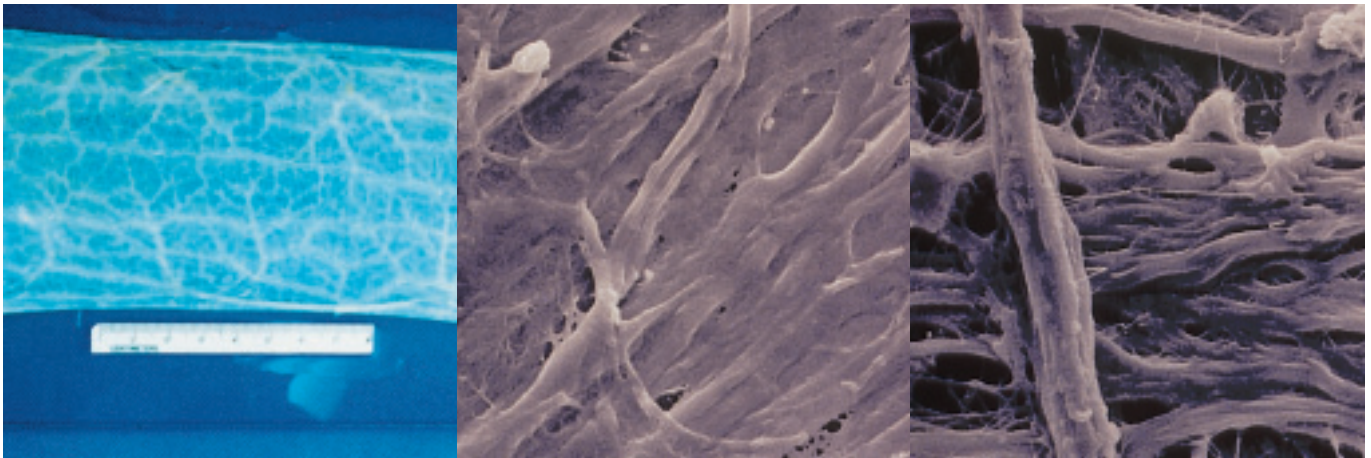


A NATURAL BIOCOMPATIBLE COLLAGEN MATRIX



Hydrated Sheet

130X SEM Smooth Side

130X SEM Rough Side

DESCRIPTION

- Used for repair and reinforcement of soft tissue.
- When rehydrated it has significant suture holding strength. Individual sheets can be rolled, folded or shaped into multiple layers for extra strength.
- Primary application is large or chronic dermal injuries where skin closure is not possible.
- Possible applications are:
 - Barrier*
 - Corneal*
 - Periodontal*
 - Oesophageal*
 - Organ patch*
 - Haemostatic plug*
 - Cleft palate*
 - Other soft tissue repair*
- Normal wound care procedures are recommended when using this product.
- Derived from the submucosal layer of the porcine small intestine.
- Processed to maintain its three-dimensional framework which provides a scaffolding for tissue ingrowth.
- Contains natural components — Collagen (Types I, III and V), Fibronectin, Decorin, Hyaluronic Acid, Chondroitin Sulphate A, Heparan Sulphate and growth factors (TGFB, bFGF).
- Conducive to smart tissue remodelling of organ augmentation and reconstruction with reduced scar formation.
- Absorbent and provides a protective barrier against the external environment and bacteria.
- Reinforces wound tissue and is absorbed by the body as it is replaced by host tissue.