



ben^{son} medical industries inc.

Research Supplies and Equipment



Benson Medical Industries Inc. is a Canadian owned and managed company, specializing in the sale and service of veterinary, hospital and dental products since 1974.

Benson Medical's head office is located in Markham, Ontario. We also serve our customers from branch offices and sub-distributors located across Canada, as well as designated sales representatives, office support staff and Clinical Product Specialists.

Benson Medical provides technical support and maintains a fully equipped service facility with factory trained personnel for both in-shop and field service repair.

Benson Medical Industries carries many items to meet your research needs. If you do not find what you are looking for, please contact us for assistance.

Why buy “Canadian”?



Benson Medical has adjusted and will continue to adjust our pricing to mirror the changes in the US/Canadian exchange rate. However, there are a number of other important factors that the purchaser should consider when comparing a product purchased from Benson Medical versus an American counterpart.

You may want to ask the following questions:

Are there any differences in the product warranty or support?

***We fully support what we sell and offer in-service training for our customers.**

Can we obtain rental product in the event of an equipment problem?

***We have some rentals available to locations that purchase their equipment from us.**

Does the equipment pass Canadian CSA electrical standards?

***We only sell CSA approved equipment.**

What exchange rate do I get if I order directly from the US?

***All of our prices are in Canadian funds.**

What are my shipping, brokerage and/or insurance costs when ordering equipment from the US?

***Like the CSA electrical approvals, these importation costs are included in our prices.**

If our Canadian list prices are slightly higher than those quoted from a US-based company, we hope you consider all of these associated costs and benefits before making your decision. Benson Medical offers a personalized service that is geared specifically for the Canadian market. We value your business.

Contents

<u>Anaesthesia Machines and Accessories</u>	4-9
<u>Tabletop</u>	4
<u>Wall Mount</u>	5
<u>Mobile/Wheeled Base</u>	6-7
<u>Multi-Patient/Pre-Set</u>	8
<u>Accessories</u>	9
<u>Vaporizers & Fillers</u>	9
<u>Waste Gas Management</u>	10
<u>Ventilators</u>	11
<u>Breathing Circuits</u>	12
<u>Face Masks</u>	13
<u>Lighting</u>	14
<u>Endotracheal Tubes, Laryngoscopes</u>	14
<u>V-Gel®</u>	15
<u>Rodent Intubation & Ventilation Supplies</u>	16
<u>Adaptors, Resus. Bags & Rebreathing Bags</u>	17
<u>Patient Warming</u>	18-19
<u>Induction Chambers</u>	20
<u>Oxygen Supplies & Accessories</u>	21
<u>Scales</u>	22
<u>SpO₂ and EtCO₂ Monitors</u>	22-23
<u>Blood Pressure Monitors</u>	24
<u>Mindray Monitors</u>	25
<u>Cardell/Midmark Monitors</u>	26
<u>Bionet Monitors</u>	27
<u>Microscopes & IV/Syringe Pumps, IV Warmer</u>	28
<u>Autoclaves, incubators & Ultrasonic Cleaners</u>	29
<u>Stainless Steel</u>	30
<u>Imaging Accessories & Euthanasia</u>	31
<u>Consumables</u>	32-33
<u>Sutureseal & Surgical Instruments</u>	33
<u>Ogena Cleaning Products</u>	34-35
<u>Find Your Local Rep.</u>	35

Anaesthetic Machines and Accessories

Table Top—Non Rebreathing



Vaporizer Not Included

'PAM' Portable Anaesthesia Machine

0-4LPM O₂: [#07-8914722](#)

0-12LPM O₂: [#07-8917756](#)

0-4LPM Medical Air: [#07-8917899](#)

MRI compatibility (Option)



Vaporizer Not Included

Handle Not Included

M3000

Anaesthesia Machine

[#M3000](#)



V-1 Table Top
Anaesthesia Machine

[#901801](#)

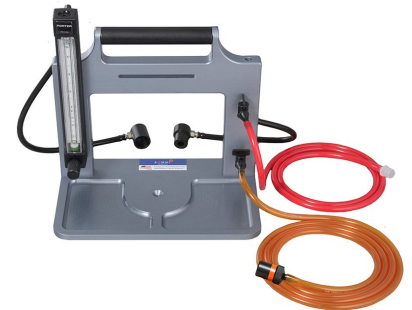


Vaporizer Not Included

VMR Table Top Assembly

0-1000cc: [#91806300](#)

0.2-4LPM: [#91806600](#)



TT2: Tabletop
Anaesthesia Unit

[#TT-17000](#)

Table Top—Rebreathing



Vaporizer Not Included

M4000 Tabletop

Anaesthesia System

[#M4000](#)



Vaporizer Not Included

VME Tabletop

Anaesthetic Machine

[#91800121](#)



Melevet Tabletop

Anaesthetic Machine

[#AM30-0002](#)



Vaporizer Not Included

CDS9000 Tabletop

Anaesthetic Machine

[#20027](#)

Wall Mount—Non Rebreathing



V9 Wall Mount

[#901802](#)



Vaporizer Not Included
'PAM' Wall Mount

[#07-891722](#)



Vaporizer Not Included
Basket style may vary

M2350 Wall Mount

[#M2350](#)

With Articulating Arm

[#M2550](#)

Wall Mount—Rebreathing



V9A Wall Mount

[#901803](#)



Vaporizer Not Included

VMS Wall Mount

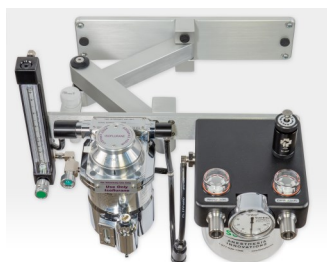
[#91800166](#)



Vaporizer Not Included

M2300 Wall Mount

[#M2300](#)



Vaporizer Not Included

M2500 Wall Mount
With Articulating Arm

[#M2500](#)



Vaporizer Not Included

VME Tabletop
Anaesthetic Machine

[#91800121](#)



Melevet Wallmount
Anaesthetic Machine

[#AM30-0003](#)



Vaporizer Not Included

CDS9000 Tabletop

[#20027](#)
Wall Mount Kit

[#22029](#)

Mobile—Non Rebreathing



V-10 - Mobile Anaesthetic Machine

#901804

Options:

Single & Double E-tank Mount, for O₂ & CO₂

Dual Vaporizers

Carrier Gas Options



Compact Convertible Anaesthesia System

#07-8915662

Options:

E-Tank Mount

Mayo Tray

Vaporizer Not Included



M1000 Anaesthesia Machine

#M1000

Options (some shown, not included):

Dual O₂ E-tank Mount

Carrier Gas Options

Vaporizer Not Included
E-Tanks Not Included



M3100 Convertible Anaesthesia Machine

#M3100

Options:

Carrier Gas Options

E-tank Mount

(shown, not included)

Vaporizer/E-tanks Not Included
A-Frame style base not shown
(Pole no longer available)



M6100 Anaesthesia Machine with Oxygen Concentrator

#M6100

Options:

Carrier Gas Options

Vaporizer & E-tank - Not Included



VMR Mobile Anaesthetic Machine
With 0-1000mL flowmeter

#91800244

With 0-4LPM Flowmeter

#91800250

Options:

E-Tank Mount

Vaporizer Not Included

Mobile—Rebreathing



Melevet Anaesthetic Machine

#AM30-0001

Options:

E-Tank Mount



Veta 5 Anaesthesia System

#0675E-PA00004

Options:

Carrier Gas Options



V10A - Mobile Anaesthetic Machine with CO₂ Absorber

#901805

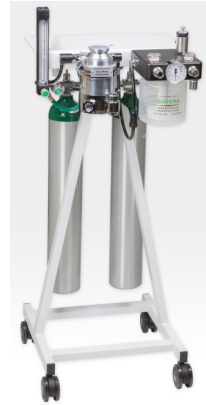
Options:

Single & Double E-tank Mount, for O₂ & CO₂

Dual Vaporizers

Carrier Gas Options

Bain Arm



M1200 Anaesthetic Machine

#M1200

Options (some shown, not Included):

E-Tank Mount

Carrier Gas Options

Bain Arm

Vaporizer Not Included
Oxygen Tanks Not Included



VMS Standard Anaesthetic Machine

#91800070

Options:

E-Tank Mount

Shelf



CDS9000

#20021

Options:

Dual flowmeter

Shelf & Drawer

E-Tank Mount



M2000 Anaesthetic Machine

#M2000

Options (some shown, not included):

E-Tank Mount

Carrier Gas Options

Dual Vaporizer

Bain Arm

Vaporizer Not Included
Oxygen Tanks Not Included



Veta 3 Anaesthesia System

#0676E-PA00002

Options:

Carrier Gas Options



VME 2 Mobile

#91805112

Options:

E-Tank Mount

Dual Flowmeter

Dual Vaporizer

Shelf



M6000 Anaesthesia Machine with Oxygen Concentrator

#M6000

Options:

Bain Arm

Carrier Gas Options

Vaporizer Not Included
Oxygen Tank Not Included

Multi-Patient & Pre-Set



RC² - Rodent
Circuit Controller

[#922100](#)

Mobile Unit

[#922120](#)



RC²⁺ - Rodent
Circuit Controller Plus

[#905300](#)



SAS-3 - Smart
Anaesthesia System

[#07-8909689](#)



Link7 Anaesthesia &
Evacuation System

[#07-8915712](#)



Compac⁵ Mobile Unit

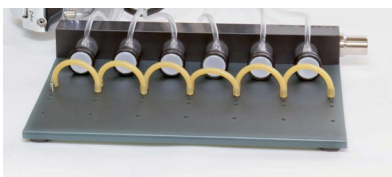
[#901812](#)

[#901816](#)



IMPAC⁶ - Integrated Multi-Patient
Anaesthesia Center

[#901808](#)



Multiple Rodent Surgical Board

[#RES3200](#)



AMD-3

[#AMD-17004](#)



Dual Procedure Circuit

[#921400](#)



Dual Diverter Manifold

[#07-8914724](#)

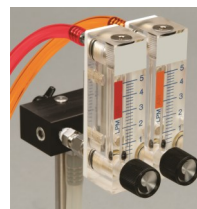
Tri-Diverter Manifold

[#07-8914725](#)



Dual Anaesthesia
Set:

[#20382](#)



Multiplex Delivery System:

2 Station: [#07-8914732](#)

3 Station: [#07-8914733](#)

4 Station: [#07-8918185](#)



Balanced Flow
Multi-Station Manifolds:

2 Port: [#RES535](#)

4 Port: [#RES536](#)

6 Port: [#RES537](#)

Accessories



Universal Control Arm

[#07-8914012](#)



Mask Stabilizer

[#07-8909415](#)



Bain Circuit Adaptor

[#MA2013](#)



Humidifier for Rodent NRB System

[#07-8914735](#)



High Pressure Alarm

[#V7320](#)



Mayo Tray/Shelf

[#000A6179](#)



Circuit Secure

[#RES520](#)



Dual E-tank Manifold Available for Many Units



Wall/Pole F/Air Holder

[#PH-4014](#)



Table Top F/Air Holder

[#PH-4015](#)



F/Air Bracket

[#20526](#)



Somni WAG Holder

[#PH-4013](#)

Vaporizers



VR30 Isoflurane, Cagemount, Key-Fill

[#VR-013](#)

VR30 Isoflurane, Selectatec, Key-Fill

[#VR-001](#)

Tec 3 Isoflurane, Cagemount, Key-Fill

[#53-T3ISO](#)

Tec 3 Sevoflurane, Cagemount, Key-Fill

[#53-T3SEV-KF](#)

Tec 3 Sevoflurane, Cagemount, Quik-Fill

[#53-SEVOQFCMT](#)



Other vaporizer styles and models available upon request



Vapofil Isoflurane key-filler

[#12016](#)



Isoflurane anti spill adaptor

[#51030](#)



Waste Gas Monitoring Badge and Analysis Report

[#931443](#)

Waste Gas Scavenging



AES Active Evacuation System

[#20500](#)



EVAC 2 Scavenging System

[#07-8918181](#)

EVAC 4 Scavenging System

[#07-8908646](#)



Somni EPS-3

[#WG-15002](#)

With Pump:

[#WG-15001](#)



Extract-All Evac Unit Bench:

[#933101](#)

Cabinet:

[#933105](#)



Filter Mate Portable Extractor

[#935101](#)



Lab Animal Machine Evacuation System

[#20504](#)



SI-6 Scavenger Interface Device

[#931445](#)



Scavenging Cube

[#931600](#)



F/Air Canister—8 pack

[#20522](#)



VaporGuard Charcoal Filter 8 pack

[#931401](#)



VaporGuard XL-R Refillable Charcoal Filter (2 pack)

[#931402](#)



Bulk Carbon Container

[#101500](#)



Somni W.A.G. - 4 pack

[#WG-15003](#)



Charcoal Pre-Pack

[#20510](#)



19mm Scavenge Tubing

[#10024](#)



Scavenger Interface Valve

[#931439](#)



Gas Evacuation for Central Vacuum

[#EVC629](#)



Scoop Stereotaxic Waste Gas Remover

[#078914736](#)



SOMNI Catch

[#WG-15005](#)



CO₂ Exhaust Kit

[#21342](#)



Gas Evacuation for Fan or Blower

[#EVC630](#)

WAG Canister - 4 pack

[#07-8909457](#)

Ventilators



Anaesthesia Work Station (AWS)
Small Animal Ventilator
#70008
200mL Attachment:
#70010



ADS2000
#2000-2000
Stand with Vaporizer Clamp
#1000-5000



Microvent II
#70032



Small Animal Ventilator
#SAV04



Merlin Small Animal Ventilator
#VSL10-1002-02



Model 2024 Pro
300-1600mL
#000A6758



Model 2024IE Pro
300-1600mL
#000A6762



Model 2002Pro Ventilator
#000A5766
Adjustable I:E Ratio
#000A5770



Model 3002 Ventilator
300-1600mL
#91806001



MRI Conversion Kit
#000A6558



Supera Outlet Cap
#ACC312



Rat Ventilation Nosecone
#921465



Articulating Wall Mount for Hallowell/Matrix
#000A6200



Rolling Stand for Hallowell/Matrix
#000A0076



Ventilator bellows options:
0-300mL
300-1600mL
1600-3000mL



Remote Breath Hold Kit
#000A4632A

Breathing Circuits



60" Bain Circuit

[#BD2491](#)



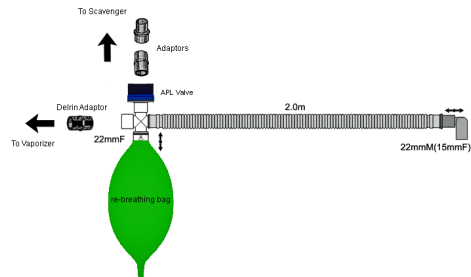
BAIN (Blue Inner Tube)

60" Length,

[#50521](#)

40" Length,

[#50520](#)



Ultra Bain System, Deluxe with Delrin & Scavenger Adaptors

[#50515](#)

Ultra Bain Circuit with Scavenger Adaptors

[#50516](#)

(Re-breathing Bag not Included with Circuit)



Mapleson E Circuit

[#921412](#)



NRB System:

[#NC-19000](#)



NRB Circuit with Nosecone:

9mm nosecone: [#921461](#)

12.5mm nosecone: [#921462](#)

14mm nosecone: [#921463](#)



Mouse NRB (25mm)

[#RES500](#)

Rat NRB (38mm)

[#RES510](#)



Mapleson D - Rodent NRB

[#07-8909636](#)



Fixed 'Y' Piece

60" Length

[#50502](#)

Pediatric 'Y', Fixed, 60"

[#50508](#)

Pediatric Circle Circuit (MRI)

25 foot length

[#50508-25](#)

30 Foot length

[#50508-30](#)

Custom lengths available



Modified Jackson Rees

(without bag)

[#50510](#)

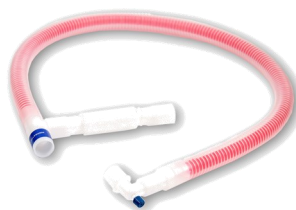


60" Universal 'F'

[#50523](#)

40" Universal 'F'

[#50522](#)



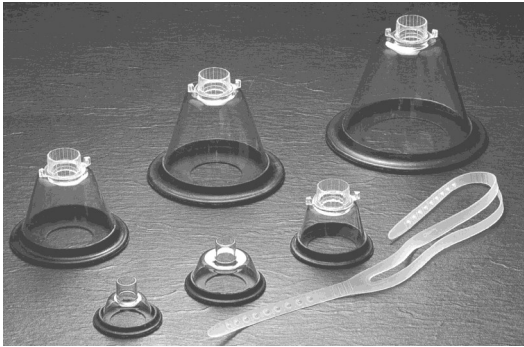
Unilimb Rebreathing Circuit
Pediatric

[#CIR529P](#)

Pediatric - Extra Long

[#CIR529PL](#)

Animal Face Masks



Animal Mask, Sz 0
[#50128](#)

Animal Mask, Sz 1
[#50129](#)

Animal Mask, Sz 2
[#50130](#)

Animal Mask, Sz 3
[#50131](#)

Animal Mask, Sz 4
[#50132](#)

Animal Mask, Sz 5
[#50133](#)

Animal Mask Set
 (One of Each Size)
[#50134](#)

Cat Masks:

Small - 1" Diameter
[#50120](#)

Medium - 1.5" Diameter
[#50122](#)

Large - 2" Diameter
[#50124](#)



Small- 2" Dia x 3" Deep
[#50110](#)

Large - 5" Dia x 4.5" Deep
[#50102](#)

XLarge- 5" Dia x 7" Deep
[#50104](#) (pictured)



O₂ Recovery Mask - Small
[#55358](#)

O₂ Recovery Mask - Large
[#55360](#)

O₂ Recovery Mask - Feline
[#55362](#)

O₂ Recovery Mask - Puppy/Kitten
[#55363](#)

O₂ Recovery Mask - Raptor
[#55359](#)



Small Mask (up to 150g)
[#305](#)

Medium Mask (150-200g)
[#306](#)

Large Mask (200-350g)
[#307](#)

Extra Large Mask (350g+)
[#308](#)

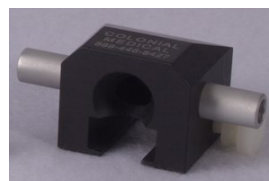
Stereotaxic Mask:

Mouse

[#921435](#)

Rat

[#921434](#)

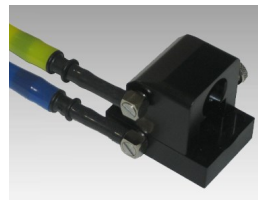


Replacement O-rings and 12 mm Latex Sheets available

Nose Cone, 9mm, Mouse
[#921609](#)

Nose Cone, 12mm,
 Large Mouse to Medium Rat
[#921612](#)

Nose Cone, 14mm, Rat
[#921614](#)



Rat-Taxic:

[#078917519](#)



Finger Cot Nosecone Kit
[#921610](#)

Replacement Finger Cot
 Black Latex
[#190501](#)



Lighting



LED 120



LED 130



255 LED



Triango 100 LED



Single/Dual Ceiling, Wall & Mobile Options



Halux N50 LED

Ritter 250
LED Exam
#250-003



E.T Tubes & Laryngoscopes

PVC Endotracheal Tubes:

Sizes 2.0-2.5mm, uncuffed

#50800-size

Sizes 3.0-10.0mm in 0.5mm increments

#50802-size

Set of 15 (3.0-10.0mm)

Size 11

Size 12

Size 13

#50250

#50252

#50254



Silicone Endotracheal Tubes:

Sizes 2-12mm in 1mm increments

Sizes 14-26mm in 2mm increments

Size 30

#ET(size)



LED Laryngoscope Handles:

F/L Green LED Handle, Stubby "AA"

#19060LED

F/L Green LED Handle, Penlite, "AA"

#19062LED

F/L Green LED Handle, Medium "C"

#19064LED



Crystal



Macintosh



Miller

Penlon Laryngoscopes:

Premier, Diamond and ISO Red laryngoscopes with standard, stubby or penlight handles and Macintosh, Miller, Seward, Robertshaw, McCoy or Wisconsin blades.

MRI compatible and disposable options available.

Ask your rep for order numbers and prices.



Seward



Robertshaw

V-Gel®



RABBIT v-gel® Sizing Guide

Size	Ideal body weight of rabbit	Product code
R1	0.6 – 1.5kg (1.3 – 3.5lb)	D30001
R2	1 – 2kg (2 – 4.5lb)	D30002
R3	1.8 – 3.5kg (4 – 8lb)	D30003
R4	2.5 – 4kg (5 – 9lb)	D30004
R5	3.5 – 5kg (8 – 11lb)	D30005
R6	4.5kg+ (10lb+)	D30006



CAT v-gel® Sizing Guide

Size	Ideal body weight of cat	Product code
C0	0.5 – 1kg (1 – 2lb)	D40000
C1	1 – 2kg (2.5 – 4.5lb)	D40001
C2	1.5 – 3.5kg (3 – 8lb)	D40002
C3	3 – 5kg (6.5 – 11lb)	D40003
C4	4.5 – 6kg (10 – 13lb)	D40004
C5	6kg+ (13lb+)	D40005

This table is intended to be a guide only. The right size v-gel® will be determined by the size and shape of a dog's pharynx, which varies depending on the breed, size and head and neck shape of the dog.

Head shape – Brachycephalic	Lean weight of dog	Head shape – Mesocephalic	Lean weight of dog	Head shape – Dolichocephalic	Lean weight of dog	Size/ Product code
	6 – 10kg 13 – 22lb		4 – 7kg 9 – 15lb		2 – 4kg 4.5 – 9lb	D3 = D20003
	9 – 15kg 20 – 33lb		6 – 10kg 13 – 22lb		4 – 7kg 9 – 15lb	D4 = D20004
	14 – 20kg 30 – 45lb		9 – 15kg 20 – 33lb		6 – 10kg 13 – 22lb	D5 = D20005
	19 – 26kg 42 – 57lb		14 – 20kg 30 – 45lb		9 – 15kg 20 – 33lb	D6 = D20006



V-Gel® Advanced Features:

- Fast, easy, safe and stress free insertions
- Anatomical matching features combined with a soft material to give a high quality pressure seal
- No post-operative coughing or gagging
- Low airway breathing resistance due to the large airway channel within the device
- Suited to ventilated as well as spontaneously-breathing patients
- Greater seal pressure – even better for ventilating
- High quality pressure seal restricting leakage of volatile anaesthetic agents, thus improving health and safety for staff
- Tip inserts into the upper oesophagus to help prevent and manage regurgitation of stomach contents
- Bowl now envelopes the whole larynx and epiglottis sits inside – avoids “blue tongue” in rabbits!
- More space and security for dental procedures
- Integrated gastric channel, enabling passive and active protection against reflux and regurgitation (dog only)
- Safer, smoother recoveries



D-grip® Flexible Circuit Support:
For circuit and monitoring cables

#D13001



VetLube

30mL Spray Bottle

#D14002

Rodent Intubation & Ventilation Nosecones



Rodent Tilting WorkStand

#70018



Mouse Intubation Pack

#71002

(Otoscope and Lidocaine Jelly not included)



Rat Intubation Pack

#71000

(Otoscope and Lidocaine Jelly not included)



Long Mouse Specula,
Autoclavable

#71030



Short Mouse Specula,
Autoclavable

#71030S



Rat Specula,
Autoclavable

#71050



Mouse Lidocaine Applicator

#71038



Incisor Loops

#71012



Rat Lidocaine Applicator

#71060



Mouse ET Tube Introducer

#71036



Rat Ventilation
Nosecone

#921465



Rat ET Tube Introducer

#71058



Mouse ET Tube, 1.22mm OD

5 pack

#71034



Mouse ET Tube, 1.27mm OD

5 pack

#71032



Rat ET tube 5 pack, 14ga

#71054

Adaptors and Connectors

6mm Male x 15mm Male tapered fresh gas outlet adaptor

#50305



23mm MJR tapered vaporizer outlet adaptor

#50382



22mm Male/15mm Female x 22mm Male/19mm Female

#50316



19mm Male x 22mm Female

#50304



Vaporizer Connector Outlet Adaptor

#50632

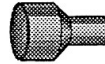


Vaporizer Connector Inlet Adaptor

#50622

19mm Male x 30mm Female (for some styles of pop off valves)

#KAB-1930D



22mm Male/15mm Female to 1/4" Hose Barb

#ADP502



Male Adaptor - Quick Connect

#850-0030-000



Scavenger "Y" Adaptor (19 mm Male x 3)

#50376



Circuit Elbow Without Port

#225-3507-800

Circuit Elbow With Port

#225-3523-804



NON re-breathing Adaptor

(For MJR circuit)

#20700V



Wye Piece Adaptor (7mm ends)

#30614-55



DELTRIN ADAPTOR

(22 mm Male - 15 mm Female x 23 mm Male - 15 mm Female)

#50518



Female QC Coupler, checked 1/4" Hose Barb

#06360-65



Male QC Coupler, 1/4" Hose Barb

#06360-82



One Way Valve 22mm M x 22mm F

#1664



Re-Breathing & Resuscitation Bags

Latex Free:

500cc

#10520BLK

1L:

#10524BLK

2L:

#10528BLK

3L:

#10530BLK

4L:

#10532BLK



5L:

#10534BLK

Latex:

6L Latex:

#32346B9

15L Latex:

#50150

30L Latex:

#50152



Smart Bag MO Adult with reservoir, Reusable Silicone:

#01BM3100-M

Smart Bag MO Child with reservoir, Reusable Silicone:

#01BM3110-M



Easy Grip BVM, Large **#4000-BL** (pictured)

Easy Grip BVM, Medium

#4010-BL

Easy Grip BVM, Small

#4020-BL

Patient Warming



Heat Therapy (water) Pump

#70308

*Extension tubing available *



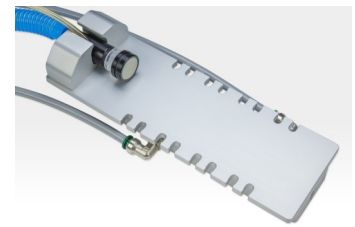
Dual Pad Connector

#6306-0001



Heated Rodent Surgical Table
For Active Scavenge

#RES4000



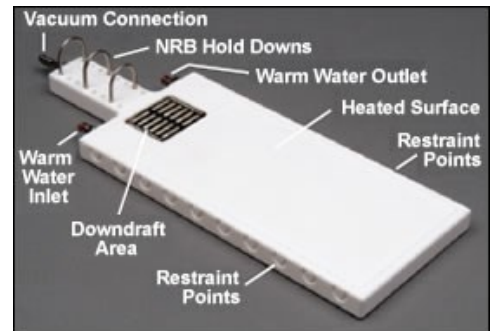
Heated Rodent Surgical Table
For Passive Scavenge

#RES4100



Patch Kit for Vinyl Pads

#V-KIT



ProStation - Vented Warming Table

#07-8914731



Small Black Vinyl Pad 16" x 20"

#V016

Medium Black Vinyl Pad 20" x 29"

#V029

Large Black Vinyl Pad 20" x 44"

#V044

X-Large Black Vinyl Pad 20" x 57"

#V057 (Case of 10 only)



Small Maxi-Therm Lite Circulator Pad - 12.5" x 18"

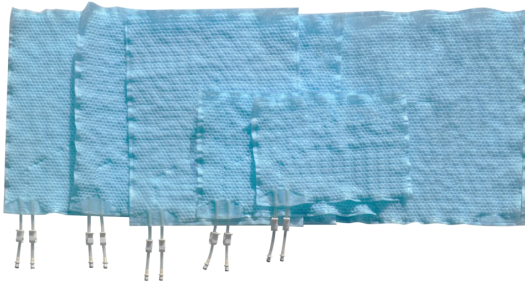
#121873

Medium Maxi-Therm Lite Circulator Pad - 25" x 33"

#121874

Large Maxi-Therm Lite Circulator Pad - 25" x 64"

#121876



Disposable Warming Pads, case of 20

Neck Collar - 4" x 19"

[#ST-003](#)

Small - 12" x 17"

[#ST-017](#)

Medium - 14" x 20"

[#ST-020](#)

Large - 18" x 24"

[#ST-024](#)



Heated Hard Pad 6" x 8"

[#70305](#)

Heated Hard Pad 9" x 12"

[#70304](#)

Replacement Connector Kit

[#000A4083](#)

Heated Hard Pad 15" x 24"

[#70302](#)

Heated Hard Pad 21" x 24"

[#70300](#)



Hot Dog[®] Controller

[#WC71V](#)

Hot Dog[®] Multi Port Controller

[#WC77V](#)

Extra Small Blanket 10" x 12"

[#V101](#)

Small Blanket 10" x 23"

[#V102](#)

Medium Blanket 16" x 22"

[#V103](#)

Large Blanket 22" x 31"

[#V104](#)

X-Large Blanket 27" x 47"

[#V106](#)

Electrical Cable, 4m

[#A101](#)

Pressure Reduction Pad
(20" x 31")

[#V600](#)

Wire Storage Rack for Blankets

[#A108VET](#)



Rodent Surgery Controlled Heat Plate

DC Powered Heat plate with controller is an ultra-slim, low noise heating plate. It allows researchers to maintain the animal's body temperature at a specific and precise temperature.

140 x 80mm

[#HT-15003](#)

250 x 150mm

[#HT-15002](#)



Induction Chambers



Induction Chamber, 1L - 3.75" w x 4.5" d x 3.75" h

[#941443](#)

Induction Chamber, 2L - 3.75" w x 9.0" d x 3.74" h

[#941444](#)

Induction Chamber, 7L - 8.25" w x 8.75" d x 5.75" h

[#941448](#)

Induction Chamber, 15L - 15" w x 7.5" d x 7.7" h

[#941454](#)

Replacement Gasket, 1L Chamber

[#705103](#)

Replacement Gasket, 2L Chamber

[#705104](#)

Replacement Gasket, 7L Chamber

[#705105](#)

Replacement Gasket, 15L Chamber

[#705106](#)



1L Chamber - 6" x 3.75" x 2.5"

[#RES643](#)

3L Chamber - 6" x 8" x 4"

[#RES644](#)

5L Chamber - 9" x 8" x 4"

[#RES645](#)

7L Chamber - 13" x 8" x 4"

[#RES646](#)



XX-Small (0.5L) - 5" h x 2.5" w x 2.5" d:

[#07-8940014](#)

X-Small (1.25 L) - 4.25" h x 4.25" w x 4.25" d:

[#07-8933389](#)

Small (3.0 L) - 4.625" h x 4.25" w x 9.25" d:

[#07-8933388](#)

Large (5.4L) - 5.75" h x 5.9375" w x 11.75" d:

[#07-8933387](#)



Vapor-Vac Hooded Chamber (9.0 L)

[#07-8933385](#)



Mini Chamber - 10" x 5.5" x 5.5"
(pictured)

[#55205](#)

Small Chamber - 16" x 7" x 7"

[#55212](#)

Large Chamber - 21" x 7" x 7"

[#55215](#)

Magnum Chamber - 23" x 9" x 9"

[#55217](#)



Induction Chamber, 1 L, vented

[#942103](#)

Induction Chamber, 2 L, vented

[#942102](#)

Induction Chamber, 7 L, vented

[#941447](#)



Induction Chamber
Select Active or Passive

Medium (9.25" x 5.25" x 5.25")

[#IC-3014](#)

Large (11.5" x 6" x 6")

[#IC-3012](#)

Flow Meters, Concentrators, Regulators & Accessories



Oxygen Regulator - 'E' yoke
With Male DISS Fitting

#50601

* Also available for N₂O & Nitrogen*



Oxygen Regulator for Large Tanks
With Male DISS Fitting

#50600

* Also available for CO₂, N₂O & Nitrogen*



0-25 LPM, Barb Outlet, with Gauge

#50613

Colours may vary



Oxygen Concentrator

#OC4000



Oxygen Concentrator

#OXYCP-5L



Oxygen tank not included

Single Cylinder Cart (D,E)

#6110

Dual Cylinder Cart (D,E)

#WE-HCC5-M

12 Cylinder Cart (D,E tanks)

#MCC1



0-15 LPM Oxygen Flow Meter
With Female DISS - Hand Tight

#15408-03

0-12 LPM CO₂ Flow meter

#FM-803C

0-15 LPM Medical Air Flow Meter

#15508-13



O₂ Concentrator 10L

#OXYCP-10L



O₂ Concentrator 10L

#78922680



Bubble Humidifier

#3230



Oxygen Cylinder Wrench

#20804



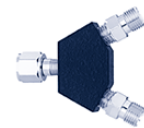
Disposable Manometer

#55356



Oxygen Adapter

#1244-3DW



Dual Oxygen Outlet (DISS)

#50932

Triple Oxygen Outlet (DISS)

#50934



Custom length hosing is available with various fittings (DISS, Puritan, etc.) for Oxygen, CO₂, N₂O, Nitrogen, Vacuum and Air.
Call for details.

Scales

MBS6000 Precision Scale - 6000 g x 0.1 g

6.9" L x 6.9" W x 0.3" H

[#816965004928](#)



Veterinary Model PS500 Weigh Scale - Up to 550lbs

22" x 22"

[#816965001903](#)

22" x 36"

[#816965001897](#)

22" x 42"

[#816965001453](#)



Indicator floor stand sold separately

Indicator floor stand sold separately

Veterinary Model MS15 Weigh Scale

20kg x 5gm

[#816975005123](#)



Veterinary Model MS20S Weigh Scale - 20kg x 10gm

20.5" x 11.5" x 2.25"

[#816965001002](#)



Heavy Duty Scale - Up to 3000lbs

39.4" W x 78.8" L x 3.9" H

[#816965006052](#)

SpO₂ & EtCO₂ Monitors



Masimo Emma
Immediate
Capnograph

[#3639P](#)



Small Airway Adaptor (2 pack)

[#17449](#)



Large Airway Adaptor (5 pack)

[#17448](#)



Masimo RAD57 SpO₂ Monitor

[#9216](#)

Lingual probe

[#1895](#)

Transflectance probe

[#1896](#)



Medtronic



Capnostream 35

EtCO₂ & SpO₂ Monitor

[#PM35-VET-KIT](#)



Small Filterline Set (Box of 25)

[#MVIH](#)

Large Filterline Set (Box of 25)

[#MVAIH](#)



Viamed hand held Capnographs

Mainstream CO₂ / SpO₂

[#4410530](#)

Mainstream CO₂ / SpO₂ with Multigas

[#4410560](#)





VetCorder Pro - SpO₂, ECG, Temp (Optional CO₂)

#48561



VetCorder Pro Airmate CO₂ Module

#48520



2500A Handheld Pulse -Ox

#2500A Vet



Charging Stand for 2500A with battery pack

#2500C-UNIV



SpO₂ Extension Cable, 3 ft.

#UNI-EXT-1



Moisture Trap & Filter

#SENS TF1-10

Filters - pkg/25

#8517-001



CO₂ Sample Line (pkg/5)

#5821-000



7500FO Pulse-Ox

#7500FO

*MRI compatible cable *

Max heart rate 321bpm



Fiber Optic Cable for MRI

20ft - **#8000FC-20**

30ft - **#8000FC-30**



Fiber Optic Cable for MRI

20ft - **#8000FI-20**

30ft - **#8000FI-30**



Lingual Clip

#2000SL



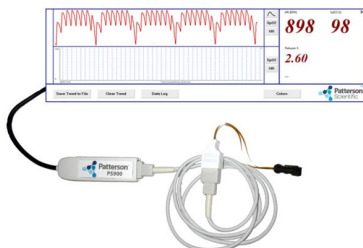
Flexible Sensor

#2000SA



Transflectance Sensor

#2000T



PS900 Cable Oximeter (requires Windows based laptop/tablet)

Rat:

#78938072

Mouse:

#78938073

Veterinary :

#78938074

Blood Pressure Monitors



petMap G3 Graphic Blood Pressure Monitor with Temperature Option

#BM7350

petMap Graphic II BP Monitoring Device

#BM7300

The new petMAP+ II offers continuous monitoring, SD card data transfer, bluetooth, rechargeable battery and optional SpO₂, ECG, EtCO₂ & temperature. Specifically designed for cats and dogs.

petMap+ II™ Graphic Blood Pressure Monitor, 5" Display

#R7451

petMap+ II™ Graphic Blood Pressure Monitor with Nonin SpO₂, 5" Display

#R7455

The new petMAP XM a handheld ECG/HR/SpO₂/TEMP Veterinary Monitoring Device. Plug-in modules for CO₂ & NIBP.

petMap XM™ ECG/Temp. Bluetooth with 5" Display

#R7500

petMap+ XM™ ECG/Temp, Nonin SpO₂. Bluetooth with 5" Display

#R7504



Replacement Cuffs Available in Sizes 2 - 13

34" Temperature Cable

#8040



EtCO₂ Module

#9027



Charger

#9043



9" Temperature Cable

#8041



ECG Module

#9026



Pole Mount

#9042



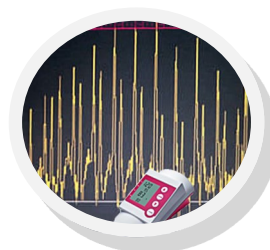
Temperature Ext. Cable

#9014



Vmed Vet Dop2 - Complete Set

#BF2S



MemoDiagnostic HDO Pro

#MDPRO

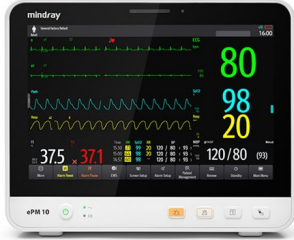


Parks Doppler 811B Complete

#811B

Multi-parameter Monitors

mindray



ePM10-Vet - 10" Multi-gesture, Capacitive Display, Nellcor SpO₂, ST & Arrhythmia, Lithium-Ion battery, NIBP, IBP, Temperature & Recorder.

[#9218E-PA0001A](#)

With Sidestream CO₂:

[#9218E-PA0002A](#)

With Sidestream CO₂ & Wifi:

[#9218E-PA0003A](#)



ePM12-Vet - 12.1" Multi-gesture, Capacitive Display, Nellcor SpO₂, ST & Arrhythmia, Lithium-Ion battery, NIBP, IBP, Temperature & Recorder.

[#9214E-PA0001A](#)

With Wifi:

[#9214E-PA0002A](#)

Add Sidestream CO₂:

[#120-013811-00](#)

Add Multigas:

[#115-030369-00](#)

Add Multigas & O₂:

[#115-030368-00](#)



SpO₂ Probe

[#V-SAT](#)



SpO₂ Cable

[#0010-20-42712](#)



ECG Trunk Cable

[#0010-30-42719](#)



ECG 3 Lead Wire

[#0010-30-42731](#)



ECG 3 Lead, Snaps

[#0010-30-42734](#)



Temperature Probe

[#125-000143-00](#)



Thermal Paper

[#A30-000001](#)



Dryline Watertrap Adult

[#125-000005-00](#)



Dryline II Watertrap

Adult - [#115-043024-00](#)

Neonatal - [#115-043025-00](#)



NIBP Hose

[#040-00084A-00](#)



ECG Clips (5 pack)

[#9101-20-58104](#)



Dryline Watertrap Neonatal

[#115-043023-00](#)



Airway Adaptor

[#115-043020-00](#)



Rolling Stand

[#045-003428-00](#)



Midmark Multiparameter Monitor with Cardell BP, SpO₂, ECG, Resp, Temp, 8" or 12" Touch screen & USB port. (CO₂, Printer, IBP, Multigas options available)

8" Multiparameter Monitor with Printer

#8020-001

8" Multiparameter Monitor without Printer

#8020-002

12" Multiparameter Monitor with Printer & HDMI

#8019-021

12" Multiparameter Monitor without Print, with HDMI

#8019-022

12" Multiparameter Monitor with Printer, IBP & HDMI

#8019-023



Max-Fast Sensor

#Maxfast-1



ECG 3 Lead Wire Set

#016-1604-00



NIBP Cuffs
Sizes 1-5, 8 & 10

#SV-'size'



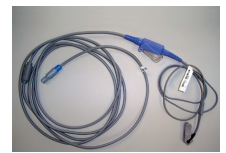
Flat ECG Clip
(pkg of 5)

#CD-0019



Printer Paper
4 rolls

#PAPER-4F



SpO₂ Sensor

#V-SAT

Extension Cable

#01-02-0183



Rolling Stand

#8008-005



ECG Trunk Cable
(Touch, 9500, Max-12)

#016-1743-00

For 8019/8020:

#016-10177-00



Temperature Probe

#590004

For 8019/8020:

#016-10164-00



IBP Cable
(Touch, Max-12)

#650-208

For 8019/8020:

#016-10180-00



Esophageal Probe
(Touch, 9500, Max-12)

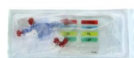
#EP-XS, #EP-S, #EP-L

For 8019/8020:

XS - **#016-10232-00**

SM - **#016-10233-00**

LG - **#016-10234-00**



IBP Transducer
(Touch, Max-12)

#016-1586-00

With Admin Kit

#016-1587-00



Mainstream CO₂ Sensor Module

#CSTAT-5



Sidestream CO₂ Sensor Module

#LoFlo

We carry all Cardell accessories, not all are listed





Brio X3Vet - SpO₂, NIBP, RR, Temp, ECG, BT-Link & BT-link mobile software, printer, Wifi, USB memory & 8" touch screen

#BrioX3Vet

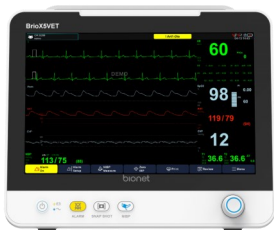
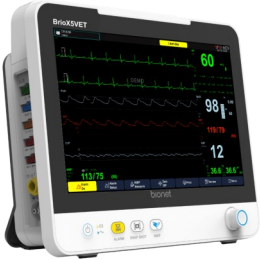
Brio X5Vet - As above with 12.1" touch screen

#BrioX5Vet

Brio X7Vet - As above with 15.6" touch screen

#BrioX7Vet

EtCO₂ or Dual gas can be added to any of the above monitors



Eosophageal Probe, ECG & Temp:
L:45mm, D:6mm: **#B-EPRB-XS**
L:70mm, D:8mm: **#B-EPRB-M**



Transflectance Sensor
#B-SPO2-R



SpO₂ Y Sensor
#B-SPO2-V



SpO₂ Extension Cable
#B-SPCBL-N



3 Lead ECG Wire Set
#B-WIRE-N



3 Lead ECG Trunk Cable
#B-CBL-N



Temperature probe
#TEM-PRV-R



NIBP Inflation Hose
#B-NBPCBL

Microscopes, Scopes & Video Scopes



National Optical model 168 is a binocular high power compound microscope. Provides superb optical clarity and reliable mechanical engineering assure years of top performance.

#168-ASC



Model 215 - Has a Seidentopf head for comfortable viewing, coaxial focusing, low drive mechanical stage and LED illumination with conveniently located intensity control. LED light rated up to 50,000 hours.

#215-RLED-ASC



The M17 compound microscope series features infinity corrected optics, ideal for college laboratories, veterinary and medical applications. Supplied with binocular head, this research level microscope also incorporates a halogen illumination system and wide field 20mm eyepieces for a very crisp image.

Infinity Corrected Binocular Microscope:

#M17B-P

Infinity Corrected Trinocular Microscope:

#M17T-P

IV, Syringe Pumps & Fluid Warmer



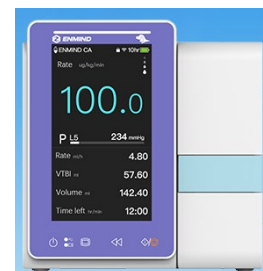
Mindray Benefusion VP3
Vet Infusion Pump

#8610B-PA00180



Enmind Vet Infusion
Pump with 2.8" screen

#EN-V3



Enmind Vet Infusion Pump
with 4.3" Touch screen

#EN-V5



AniFM S3 Infusion
Syringe Pump

#AP32E-PA0001A



Fluid Warmer with
LCD Display

#FW-300VET

Autoclaves, Incubators & Ultrasonic Cleaners



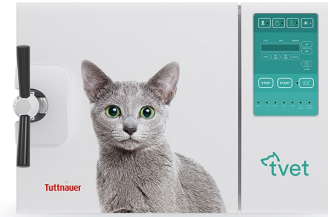
Manual Large Capacity Autoclave
15" x 30"
#3870M

Automatic also available



Class B Sterilizer, 10" x 18"
#T-EDGE10B

Class B Sterilizer, 11" x 18"
#T-EDGE11B



Fully Automatic Vet Autoclave 10"
#TVET 10E

Fully Automatic Vet Autoclave 11"
#TVET 11E



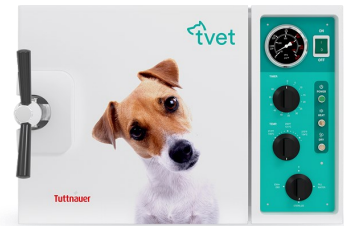
Manual Autoclave 9"
#2340M

Manual Autoclave 10"
#2540M



M9 UltraClave Automatic Sterilizer
#M9-043

M11 UltraClave Automatic Sterilizer
#M11-043



Manual Vet Autoclave 9"
#TVET 9M

Manual Vet Autoclave 10"
#TVET 10M



UltraFast Automatic Sterilizer,
7.6" x 1.6"
#M3-001



Binova Incubator
#WTL198-0079



MiniBio Incubator
#WTL198-0057

Chamber Brite Autoclave
Cleaner Box of 10 packets
#CB0010



Rapid Biological Indicator
For Steam & Gravity Autoclaves
#WTL198-0058



Clean & Simple
Ultrasonic Cleaner:

1 Gallon
#CSU1BK

1 Gal, with Heater
#CSU1HBK

3 Gallon
#CSU3BK

3 Gal, with Heater
#CSU3HBK

6.5 Gallon
#CSU6BK

6.5 Gal, with Heater
#CSU6H BK



QuickClean Ultrasonic Cleaner:

1.2 Gallon
#QC1-01

3.3 Gallon
#QC3-01

6.6 Gallon
#QC6-01



Cavitation Performance
Test

#WTL198-0086



Clean & Simple
Ultrasonic/Enzymatic
Tablets (box/64)
#CS0064



Stainless Steel, Cabinets and Caging



V-Top Surgery Table with Adjustable Hydraulic Column, 50"

[#100-4041-00](#)

V-Top Surgery Table with Adjustable Hydraulic Column, 60"

[#100-4071-00](#)

Flat-Top tables also available

IV Rod for Surgical Tables

[#200-3041-09](#)



Aluminum IV Pole, 5 leg, 2 hook

[#52022](#)

Aluminum IV Pole, 5 leg, 4 hook

[#52023](#)



Mayo Instrument Table, Double Post

[#52027](#)



Faucet Mount Eye Wash Station

[#107-8492-00](#)



Medical Tray

[#52029](#)



Treatment Table On Casters With Drawer

[#101-4640-85](#)

Treatment Table On Legs With Drawer

[#101-4640-95](#)



Pedestal Exam Table

[#101-9640-00](#)



Cage Bank, 3 Unit Option 1 with Mobile Base, Sides and Top

[#261-0001-00](#)



Mobile Electric Lift Table

[#103-0170-16](#)

With Midmark Platform Scale

[#110-3410-08](#)



Hinge Mounted IV Rod



O₂ Therapy Door



Plastisol Coated Cage Floors

This is just a small selection of our products

Call for more options

Imaging Accessories



Imaging Chamber:

3 Mouse: [#078920341](#)

5 Mouse: [#078919969](#)



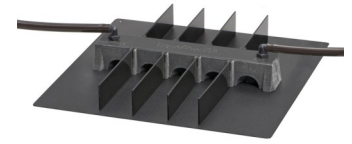
EquaFlow 3XL
Mouse/Rat:

[#EQF3001](#)



EquaFlow 5 Station
Mouse:

[#EQF5001](#)



EquaFlow 10 Station
Mouse:

[#EQF10001](#)



Optical Imaging
Chamber, 5 mouse:

[#941440](#)



CX-IM Non-Rebreathing
System:

[#921439](#)

Rat Phantom:

Radiopaque (X-ray/CT) and Fluorescent
(Green, Red, and Cy5 Filter sets)

Radiopaque (X-ray/CT) and Luminescent
(blue emission)

Luminescent (blue emission) and Fluorescent
(Green, Red, and Cy5 Filter Sets)



Euthanasia Supplies



Easy to use Preset Flow System (PFS) is designed to eliminate the variables the lead to non-compliance. Delivers accurately measured volumes for single housing cages, allowing any lab or facility to have consistent, reliable CO₂ delivery.

Preset Flow System for Mice and
Rats:

With Nut & Stem For Large Tanks:

[#934105](#)

With Yoke for Small Tanks:

[#934115](#)

For Wall Outlet:

[#934130](#)

CO₂ Flowmeter 0-12 LPM with DISS
Fittings:

[#FM-803C](#)

CO₂ Regulator for small tanks with 0-12
LPM flow meter:

[#M1-940-12FM](#)

CO₂ Regulator for large tanks with 0-12
LPM flow meter:

[#M1-320-12FM](#)



Universal Lid, Rat

18.75" x 10.30"

[#941445](#)



Universal Lid, Mouse

12.25" x 7.75"

[#941442](#)

Consumables



VaporGuard - 8 pk
Charcoal Filter

#931401



Charcoal
Prepack

#20510



Somni W.A.G.
4 pack

#WG-15003



F/Air Canister
8 pack

#20522



OgenaShield Moisturizing
Hand Cleaner

500mL - **#H50124-5ML**

4L - **#H50124-004**



WAG Canister
4 pack

#07-8909457



VaporGuard XL-R Refillable
Charcoal Filter (2 pack)

#931402



Powered Autoclave Cleaner
Box of 10 packets

#CB0010



Speed-Clean Sterilizer Cleaner
For Ritter & Midmark Autoclaves

#002-0396-00

Bulk Carbon Container

#101500



Amsorb Plus
Twin Pack

#AMAB3000



Amsorb Plus
1kg Bag

#AMAB3400



Monorapid Hand Sanitizer
1L with Pump

#AS-MAN-1000P

120mL Bottle

#AS-MAN-120



Amsorb Plus
1.2 L Cartridge

#AMAB3201



VetLube
30mL Spray Bottle

#D14002



Dermotan® Hand Soap

#AS-DERMOTAN-1000

Clean & Simple - Ultrasonic/
Enzymatic Tablets (box/64)

#CS0064



Waste Gas Monitoring
Badge and Analysis Report

#931443



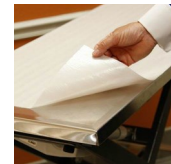
Smart-Y for Centesis
Package of 5

#AH7073



3-Way Stopcock with Swivel
Male Luer

#MX5311L



Disposable Table Covers

#V501

6" x 30" 12 mil Latex
Sheet for rodent masks

#07-8917456



Spectra 360 Electrode
Gel, 8.5oz.

#12-08



Kleenwise Distiller Descaler

#KSD



Reusable/Autoclavable Stapler Handle

#S1004

35 Wide Stapler Cartridge

#S1003-12



Integrators/Type 5
(Steam)

#WTL198-0082



Multi-Variable
Indicator/Type 4
Indicator (Steam)

#WTL198-0081



JUN AIR Compressor Oil

[#20-520-0002](#)



Bio-Lube Cleaner

[#20-520-0005](#)



Bio-Lube Pen

[#20-520-0006](#)



Ultra Scale

[#20-530-0002](#)



Disp. Prophy Angle

[#20-255-0006-10](#)

Examination gloves available in Latex, Vinyl or Nitril in sizes x-small to x-large.

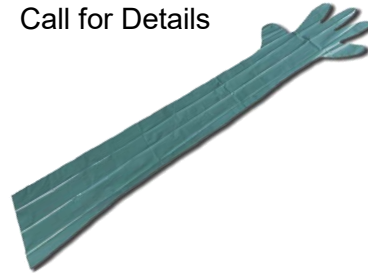
Bouffant caps 21" in a variety of colors and 24" white

Call for Details



Plastic Sleeves available in various colours, thicknesses & lengths (35"-39"), polyethylene & copolymer, non-sterile & gamma irradiated options.

Call for Details



SutureSeal™ is a non-toxic biodegradable hydrogel liquid bandage that lasts up to 14 days. Sterile, colorless, odorless and designed to enhance the healing process.



Single Pack

[#SS-1mL](#)

Clinical Challenges

Lick Granulomas and lacerations
Limited treatment options
Cone is not ideal



Post-Staples
Exposed Staples
Post-procedure itching



Open Wounds
Open wounds that do not need sutures or staples



The SutureSeal Advantage

Seal

SutureSeal is designed to form an adherent gel that seals the affected area



Protect

SutureSeal is a durable non-toxic sealant that protects the wound; biodegrades after 2 weeks



Heal

SutureSeal permits airflow to enhance wound healing and minimize scarring



Instruments

High Quality Stainless Steel Instruments:



Dental

Surgical

Left Handed

Micro Instruments

Call for more information

Puraclenz allows for continuous, 24/7 purification of pathogens in the air and on surfaces. Weighing under 3 pounds, and only 11" tall or less, all three units are easy to handle. Simply plug in the unit, turn it on, and begin purifying your environment. An elegant, compact design makes it easy to install on walls or ceilings, or even used as a portable unit.



Up to 750 sq.feet

[#Q60750C](#)

Up to 1,500 sq.feet

[#Q61500C](#)

Up to 3,000 sq.feet

[#Q63000C](#)

PCO Cell

[#Q66001](#)

Pre-Filter (2-pack)

[#Q67001](#)



Mixing Station:

1 Way - [#A8031A-G](#)

2 Way - [#A8032A-G](#)

3 Way - [#A8033A-G](#)



Foaming Trigger Sprayer

[#A8019A](#)



4L hand dispensing pump

[#A8050](#)



No Drip Pump For 200L Drum

[#A4600BKV](#)



OgenaShield Moisturizing Hand Cleaner

500mL - [#H50124-5ML](#)

4L - [#H50124-004](#)

Pump-Up Foamer:



1.5 Litre

[#S2100](#)



5 Gallon Pail Rack

[#A8027](#)



OgenaShield Pure Oxygen HD Shampoo Application Kit

[#G60625-5AK](#)



Hose End Foamer with Ball Valve

[#A8040B-32BV](#)



8 Litre

[#S2500](#)



Backpack Sprayer

[#S4100](#)



Battery Operated (Blue)

[#S4500](#)



OgenaShield Pure Oxygen HD Shampoo

500mL - [#G60625-5ML](#)

3.78L - [#G60625-004](#)



Kennel Foamer With 32oz Bottle

[#A8040B-32](#)

Cleaning Accessories



Long Handled Scrub Brush

[#F2760-XX](#)



Vikan Dustpan

[#F2820-XX](#)



20" Single Blade
Ultra Hygiene Squeegee

[#F2400-XX](#)



20" Foam Blade
Squeegee

[#F2430-XX](#)



1-3 Tool Wall Bracket

[#F2970-XX](#)

(4-6 Tool also available)



Ergonomic Scrub
Brush

[#F2740-XX](#)



Extra Large
Scrub Brush

[#F2730-XX](#)



Wall/Floor Scrub
Brush

[#F2870-XX](#)



51" Ultra Hygiene Handle

[#F2640-XX](#)

(59" also available)



Detail Brush

[#F2810-XX](#)



6" Mini Handle

[#F2610-XX](#)



Narrow Utility Brush

[#F2780-XX](#)



High-Low Brush

[#F2860-XX](#)

Your Local Benson Rep.

BC & Southern Alberta:

Donna Locke, BSc., RVT, RLAT

Clinical Product Specialist

1-800-563-3859 ext 272

dlocke@bensonmedical.ca

Northern Alberta, Saskatchewan & Manitoba:

Jodi Walchuk, RVT

Clinical Product Specialist

1-800-563-3859 ext 273

jwalchuk@bensonmedical.ca

Ontario:

Krista Holdsworth, AHT, RLAT

Clinical Product Specialist

1-800-563-3859 ext 275

kholdsworth@bensonmedical.ca

Ottawa & Western Quebec:

Mark Landry, AHT

Clinical Product Specialist

1-800-563-3859 ext 281

mlandry@bensonmedical.ca

Atlantic Provinces, Eastern Quebec:

Shauna Cormier, RVT

Clinical Product Specialist

1-800-563-3859 ext 282

scormier@bensonmedical.ca

ANAESTHESIA VAPORIZER SERVICE

Manufacturer's comprehensive overhaul and calibration includes:



- * Complete disassembly and cleaning
- * Internal and external inspection
- * Replacement of internal wicks and seals
- * Calibration and adjustment of Thermo-Control
- * Leak test and performance verification
- * Rental vaporizers provided upon request

On site vaporizer output verification is **NOT** a substitute for service & calibration

Vaporizers ARE NOT on site serviceable



TEC III



TEC IV



Vapor 19.1



OHIO

We also do Annual Preventative Anaesthetic Machine Maintenance

Veterinary service companies are highly unregulated, it is important to be aware that Benson Medical has been servicing anaesthetic equipment since 1974 and maintains the following important business and service practices;

- * We maintain a Health Canada establishment license.
- * We're an authorized Canadian distributor for your most prominent anaesthesia equipment.
- * We maintain liability insurance.
- * We offer a comprehensive service report.



benson
medical industries inc.

www.bensonmedical.ca
1.800.563.3859